

Welded, Full Finished

# PIPE & Tubes

PRODUCT CATALOGUE



## METAL CRAFT INDUSTRIES



**Round Pipe**



**Square Pipe**



**Rectangular Pipe**



**Scaffolding Pipe**



## Ahmed Group - Metal Craft Industries

We, **Ahmed Group**, incepted in the year 2006, are well established manufacturers and suppliers of a qualitative range of Industrial and Fabrication Products. These products are available in numerous specifications, which can be customized as per the requirement of our clients. Our range is highly appreciated by our clients for the optimum quality, durability, sturdy construction, corrosion resistance and low maintenance characteristics.

**Metal craft Industries** is a metal fabrication company that is totally dedicated to serving the sign industry. We believe that our customers should never settle for less than the best. Our goal from the start was, is and always will be to manufacture and deliver the best metal products for the sign industry. When customers want the best, they turn to Metalcraft. We are proud of our reputation and will continue to provide quality products and unmatched service to our customers.

**Metal craft Industries**, a Nasik based firm, offering a variety of Lighting Poles, Pipes and Lines Materials. The variety of Lighting Poles Pipes and Lines Materials that we offer includes Tubular Poles (For Street Lighting & Transmission Lines), Decorative Lighting Poles, Octagonal Poles, High Mast Poles, M.S/G.I. Pipes, Electric Poles, Line Materials etc. Our organization is showing a substantial growth since the time of its establishment in the year 2013. We are flourishing at a fast pace under the due guidance of our knowledgeable Chairman, **Mr. Rahil Ahmed Siddique**. We have also carved a niche for ourselves among the topmost Poles Suppliers in India.

### Our Mission

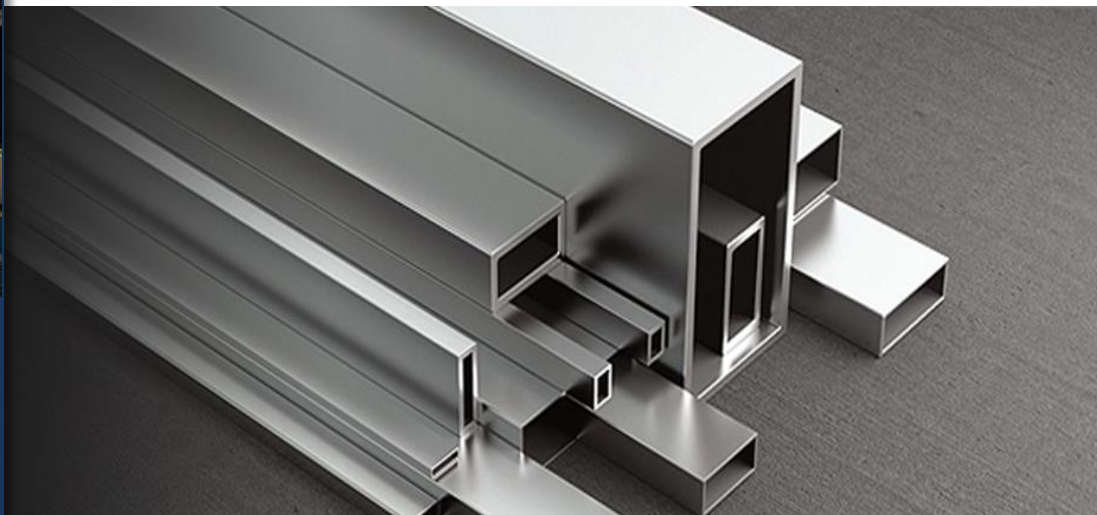
To build a strong brand and maintain superior quality standard for customer satisfaction.

### Our Vision

Achieve numerous positions in pole, cable, and pipes industry in terms of volume, turnover and quality in the Asian Continent.

### Our Quality

Our focus on quality is evident in our product range. We have never compromised on quality and have successfully achieved a high level of customer appreciation resulting in long-lasting relations.





## Round Pipe



**Metal Craft Industries** offers a wide spectrum of Stainless Steel tubes for use in a diverse range of industries. These products are highly demanded for various Applications in Major Industries because of their customized design, excellent performance and capability to withstand heavy pressure. We are exporter and supplier of high quality and wide range of round steel tube in India. Our Round Stainless Steel tubes are available in various size and shapes based on the customers' requirements.

At **Metal Craft Industries**, we offer a varied selection of mechanical- and structural-grade round steel tubes. Available in sizes ranging from 3/8" outside diameter to 20" outside diameter, our round steel tubes are sure to meet the requirements of your application.

### Finding the Right Fit:

Finding the right size round steel tubes can be difficult. Unlike other companies that stock steel tubing in a limited range of sizes, at Ahmed Group, we offer a broad selection that include steel tubing in sizes that are hard to find anywhere else.

### Round Mechanical Steel Tubing:

Mechanical round tubes are essential for everything from agricultural machinery to appliances. Because we put our mechanical round tubes through superior processing, we are able to offer turnkey products.

### Round Structural Steel Tubing:

To build a skyscraper, bridge or highway, you need the right materials. Round structural steel tubing from Ahmed Group is the best in its class. Our round structural steel tubing is available in a broad range of sizes.

Our organization is engaged in offering a qualitative range of MS round pipe to our clients at industry leading prices. These are available in various shapes such as round pipe, square pipe, seamless pipe and e. R. W. Pipe that meet the individual requirement of our clients. Our range is widely used in engineering and other construction industry. Furthermore, we offer our range at competitive prices.

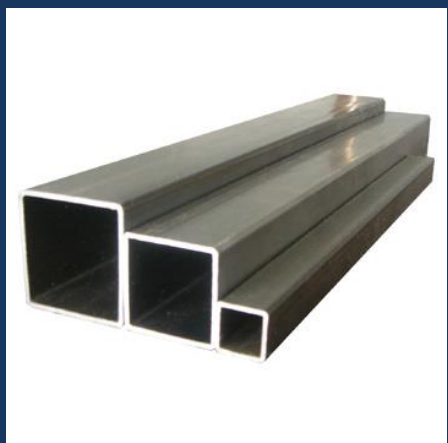
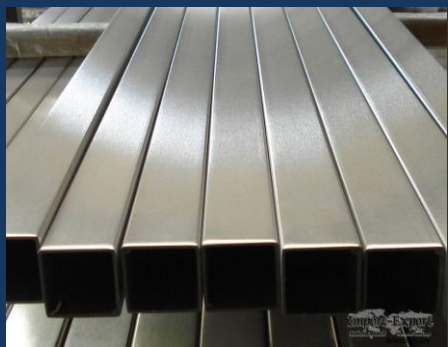
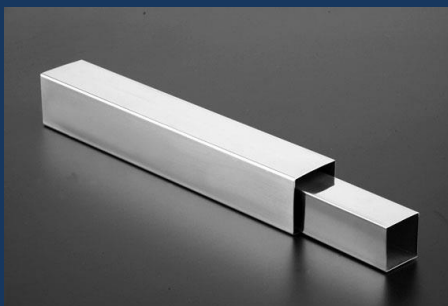


# Round Pipe

SPECIFICATION FOR STEEL ROUND PIPES									
SIZE		OUTSIDE		WALL		Nominal Weight of Pipe			
(N.B.)		Diameter		Thickness		Plain ended		Screwed : Socketed	
MM.	Inch	Min.	Max.	MM.	SWG.	Kg/Mtr	Mtrs. / T	Kg/Mtr	Mtrs. / T
15 L	1/5" L	21.00	21.40	2.00	14	0.95	1053	0.96	1042
M	M	21.00	21.80	2.60	12	1.21	826	1.22	820
H	H	21.00	21.80	3.20	10	1.44	694	1.45	689
20 L	3/4" L	26.40	26.90	2.30	13	1.38	724	1.39	719
M	M	26.50	27.30	2.60	12	1.56	641	1.57	637
H	H	26.50	27.30	3.20	10	1.87	534	1.88	532
25 L	1" L	33.20	33.80	2.60	12	1.98	505	2.00	500
M	M	33.30	34.20	3.20	10	2.41	415	2.43	411
H	H	33.30	34.20	4.00	8	2.93	341	2.95	339
32 L	1.1/4" L	41.90	42.50	2.60	12	2.54	395	2.57	389
M	M	42.00	42.90	3.20	10	3.10	322	3.13	319
H	H	42.00	42.90	4.00	8	3.79	264	3.82	261
40 L	1.1/2" L	47.80	48.40	2.90	11	3.23	308	3.27	305
M	M	47.90	48.80	3.20	10	3.56	281	3.60	277
H	H	47.90	48.80	4.00	8	4.37	229	4.41	226
50 L	2" L	59.60	60.20	2.90	11	4.08	245	4.15	241
M	M	59.70	60.80	3.60	9	5.03	199	5.10	196
H	H	59.70	60.80	4.50	7	6.19	161	6.26	159
65 L	2.1/2" L	75.20	76.00	3.20	10	5.71	175	5.83	171
M	M	75.30	76.60	3.60	9	6.42	155	6.54	153
H	H	75.30	76.60	4.50	7	7.93	126	7.05	124
80 L	3" L	87.90	88.70	3.20	10	6.72	149	6.89	145
M	M	88.00	89.50	4.00	8	8.36	119	8.53	177
H	H	88.00	89.50	4.80	6	9.90	101	10.40	96
100" L	4" L	113.00	113.90	3.60	9	9.75	102	10.00	100
M	M	113.10	115.00	4.50	7	12.20	82	12.50	80
H	H	113.10	115.00	5.40	5	14.50	69	14.80	67
125" M	5" M	138.50	140.80	4.80	6	15.90	63	16.40	61
H	H	138.50	140.80	5.40	5	17.90	56	18.40	54
150" M	6" M	163.90	166.50	4.80	6	18.90	53	19.50	51
H	M	163.90	166.50	5.40	5	21.30	47	21.90	46



## Square Pipe

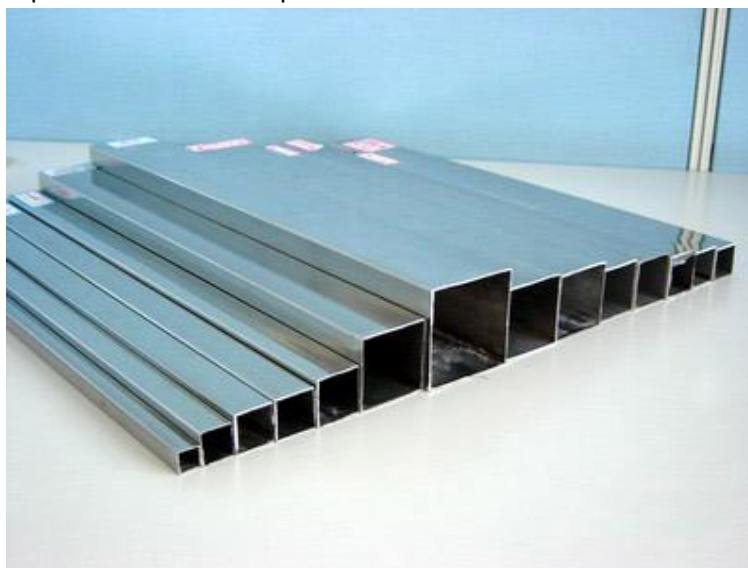


**Square Steel Pipes and tubes** are used in different industrial applications. These are used for accomplishing different purposes. The common areas, where these rectangular pipes and tubes are used are: supermarket racks, container fabrication, auto fabrication, motor cycles, doors and windows, industrial plant structure, bicycles, furniture etc. There are several guidelines for defining the rectangular pipes and tubes. These guidelines are length, width, height, welding gap, radius, diameter etc. According to the nature of the requirements, the size of the rectangular steel pipes and tubes can be altered. The thinner or the slimmer tubes are used for developing structures and frames. The seamless Square pipes can resist more pressure than the welded seam pipes.

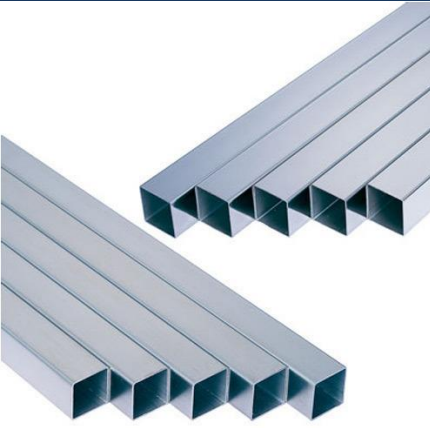
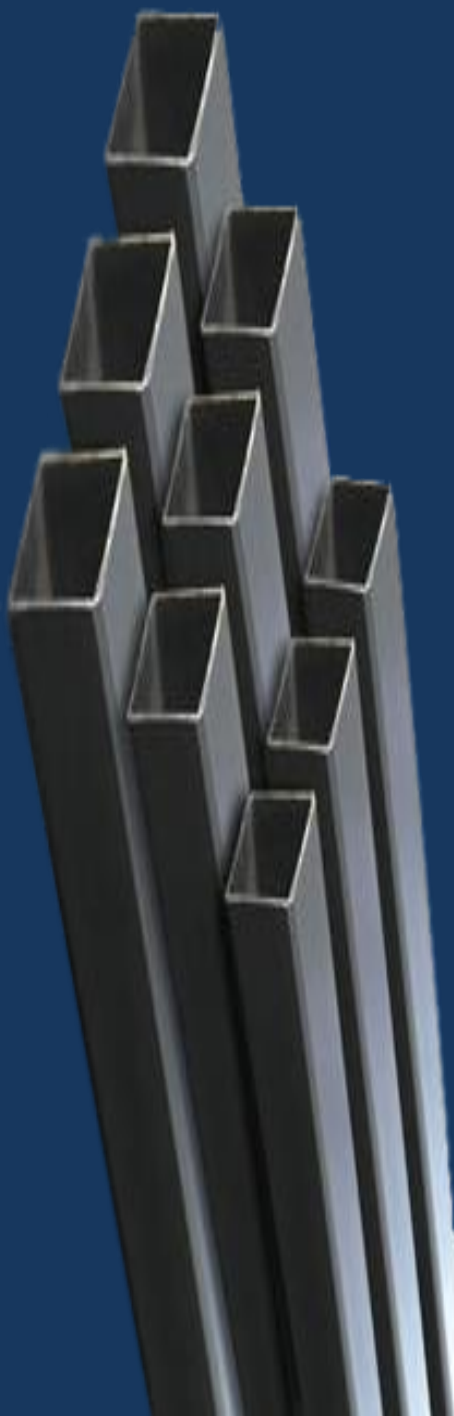
Our Stainless Steel Tubes are manufactured and tested to international Standards and specifications as per ASTM. Our Square Stainless Steel Tubes have very durable and sturdy finish, widely applicable for all types of fabrication projects that are exposed to the elements – chemical, acidic, fresh water, and salt water environments. We are one of the largest suppliers, manufacturer and exporter of Stainless Steel tubes in India.

At Metal Craft Industries, we aim to meet the needs of clients in every industry. To that end, we offer square steel tubing in structural and mechanical grades. Our broad selection includes tubes in sizes from 3/8" x 3/8" up to 20" x 20".

Our organization specializes in manufacturing and supplying a superior range of Ms square pipes. These are manufactured using best grade stainless steel, which are procured from trusted vendors in the market. Our range is extensively used in various industries such as oil refineries, petrochemical plants, sugar mills, chemical plants and fertilizers plants.

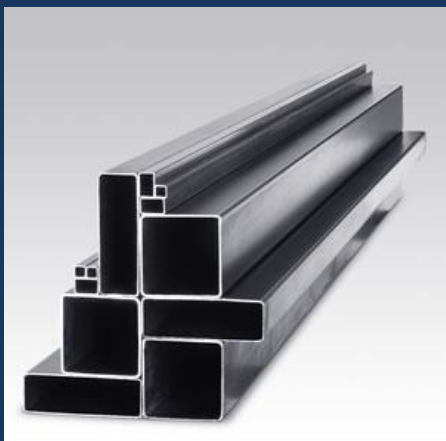
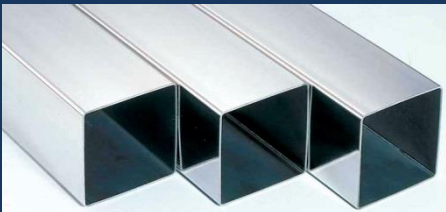


# Square Pipe



SPECIFICATION FOR STEEL SQUARE PIPE			
Round Size	Size	Thick	Length
26.90	20 x 20	2.00	6.06
33.70	25 x 25	2.50	6.06
48.30	39 x 39	2.10	6.06
48.30	38 x 38	2.50	6.06
48.30	39 x 39	3.00	6.06
48.30	38 x 38	3.50	6.06
48.30	38 x 38	3.80	6.06
48.30	50 x 25	3.50	6.06
50.80	40 x 40	1.60	5.50
60.30	48 x 48	2.50	6.06
60.30	49 x 49	2.50	6.06
60.30	48 x 48	4.00	6.06
60.30	49 x 49	3.00	6.06
60.30	49 x 49	3.20	7.03
63.50	50 x 50	2.00	6.06
63.50	50 x 50	2.90	5.85
63.50	50 x 50	4.50	6.06
63.50	60 x 40	4.30	6.06
63.50	60 x 40	4.00	6.06
76.10	60 x 60	3.00	6.06
76.10	60 x 60	4.00	6.06
76.10	60 x 60	5.00	6.06
76.10	80 x 40	2.40	6.06
76.10	80 x 40	4.00	6.06
88.90	80 x 60	5.00	6.06
88.90	96 x 48	4.30	6.06
95.00	75 x 75	4.00	6.06
101.60	80 x 80	3.00	6.06
101.60	80 x 80	3.00	6.06
101.60	80 x 80	3.85	6.06
101.60	80 x 80	3.85	6.65
101.60	80 x 80	4.00	6.06
101.60	80 x 80	4.00	6.06
101.60	80 x 80	4.80	6.06
114.30	90 x 90	3.00	6.06
114.30	120 x 60	3.15	6.06
114.30	122 x 61	3.00	6.06
114.30	122 x 61	5.00	5.00
127.00	100 x 100	4.00	6.06
127.00	100 x 100	4.00	6.06
127.00	120 x 80	5.00	6.06
127.00	125 x 75	3.00	6.06
127.00	125x 75	5.00	6.06
152.00	160 x 80	3.50	2.50
165.10	172 x 92	4.80	6.05

# Rectangular Pipe



**Rectangular steel pipes and tubes** are used in different industrial applications. These are used for accomplishing different purposes. The common areas, where these rectangular pipes and tubes are used are: supermarket racks, container fabrication, auto fabrication, motor cycles, doors and windows, industrial plant structure, bicycles, furniture etc. There are several guidelines for defining the rectangular pipes and tubes. These guidelines are length, width, height, welding gap, radius, diameter etc. According to the nature of the requirements, the size of the rectangular steel pipes and tubes can be altered. The thinner or the slimmer tubes are used for developing structures and frames. The seamless rectangular pipes can resist more pressure than the welded seam pipes.

We have developed our core competence in the manufacturing and supplying of high quality Rectangular Pipe that are engineered according to the specifications of our clients. Product innovation and quality control has helped us meet the ever expanding demands of the industry. At Ahmed Group, we offer rectangular steel tubing in both mechanical and structural grades. Our selection includes a wide array of sizes, ranging from 3/8" x 1-1/2" up to 12" x 20".

## **Mechanical Rectangular Steel Tubing:**

Mechanical-grade rectangular steel tubing provides vital support to all types of mechanical applications. Big rig trucks, agricultural machinery, and even appliances rely on Ahmed Group for turnkey mechanical steel tubing. With a broad selection and expert customer service, we ensure that we can help you find the right steel for your application.

## **Structural Rectangular Steel Tubing:**

Structural-grade rectangular steel tubing provides support to static structures of all types. We supply rectangular steel tubing for bridges, buildings, highways and much more. Our diverse selection means you will find the right steel tubing for your project at Ahmed Group.





# Rectangular Pipe

## SPECIFICATION FOR STEEL RECTANGULAR PIPE

Round Size	Size	Thick	Length
26.90	20 x 20	2.00	6.06
33.70	25 x 25	2.50	6.06
48.30	39 x 39	2.10	6.06
48.30	38 x 38	2.50	6.06
48.30	39 x 39	3.00	6.06
48.30	38 x 38	3.50	6.06
48.30	38 x 38	3.80	6.06
48.30	50 x 25	3.50	6.06
50.80	40 x 40	1.60	5.50
60.30	48 x 48	2.50	6.06
60.30	49 x 49	2.50	6.06
60.30	48 x 48	4.00	6.06
60.30	49 x 49	3.00	6.06
60.30	49 x 49	3.20	7.03
63.50	50 x 50	2.00	6.06
63.50	50 x 50	2.90	5.85
63.50	50 x 50	4.50	6.06
63.50	60 x 40	4.30	6.06
63.50	60 x 40	4.00	6.06
76.10	60 x 60	3.00	6.06
76.10	60 x 60	4.00	6.06
76.10	60 x 60	5.00	6.06
76.10	80 x 40	2.40	6.06
76.10	80 x 40	4.00	6.06
88.90	80 x 60	5.00	6.06
88.90	96 x 48	4.30	6.06
95.00	75 x 75	4.00	6.06
101.60	80 x 80	3.00	6.06
101.60	80 x 80	3.00	6.06
101.60	80 x 80	3.85	6.06
101.60	80 x 80	3.85	6.65
101.60	80 x 80	4.00	6.06
101.60	80 x 80	4.00	6.06
101.60	80 x 80	4.80	6.06
114.30	90 x 90	3.00	6.06
114.30	120 x 60	3.15	6.06
114.30	122 x 61	3.00	6.06
114.30	122 x 61	5.00	5.00
127.00	100 x 100	4.00	6.06
127.00	100 x 100	4.00	6.06
127.00	120 x 80	5.00	6.06
127.00	125 x 75	3.00	6.06
127.00	125x 75	5.00	6.06
152.00	160 x 80	3.50	2.50
165.10	172 x 92	4.80	6.05

## Scaffolding Pipe



**Scaffolding Pipes** are widely used for supporting man and materials, tools and tackles during construction, alteration, demolition and maintenance works because of their several advantages over conventional type of timber / bamboo scaffolding. Generally, made of hot dipped, galvanized steel, which offers long-term corrosion resistance, it won't rot, absorb moisture, split, splinter, swell, warp or burn, thereby providing considerable life-cycle cost savings. While weighing less than the average wood scaffold plank, steel scaffolding is stiffer over any given span, reducing bounce and providing a more stable platform.

We manufacture and export wide range of Scaffolding tubes that are characterized with high performance and provide the building industry with completely safe, economical solutions. They comply to the set industrial standards in terms of quality & safety. Generally, made of hot dipped, galvanized steel, which offers long-term corrosion resistance, it won't rot, absorb moisture, split, splinter, swell, warp or burn, thereby providing considerable life-cycle cost savings.

Tubes Scaffolding are widely used for supporting man & materials, tools & tackles during construction alteration, demolition and maintenance works because of their several advantages over conventional type of timber/ bamboo scaffolding of an ancient time.

### ACCESSORIES

Mast with continuous tapered polygonal cross section have high load bearing strength oscillation due to wind speed and related stress are fully taken care in the design.

### Application Areas

Our range of fencing tubes are available in a variety of dimensions and can also be customized as per the client's requirement.

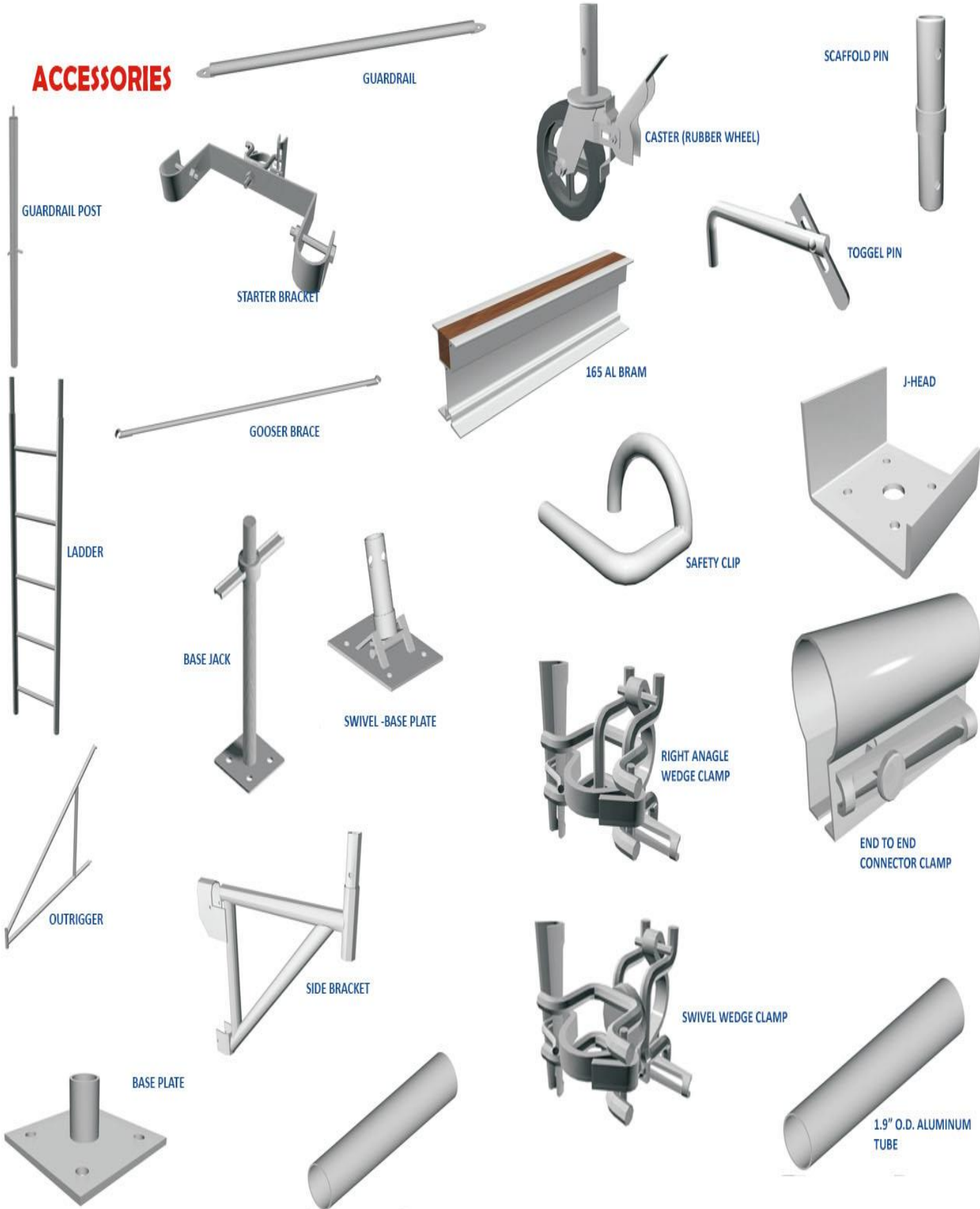
### Fencing tubes have a wide range of applications in

- ❖ Handrails
- ❖ Culverts
- ❖ Parking meter posts
- ❖ Columns
- ❖ Fence
- ❖ Towers
- ❖ Posts
- ❖ Caissons
- ❖ Supports
- ❖ Piling
- ❖ Sign poles
- ❖ Rollers
- ❖ Sand-wash
- ❖ Bumpers
- ❖ Casing
- ❖ Bracing



# Scaffolding Pipe Clips and Accessories

## ACCESSORIES





## **METAL CRAFT INDUSTRIES**

**Reg. Office:**

6, Prime Point, Dream Valley Society, Shingada Talav, Opp. SBI Bank, Near Sarda Circle, Nashik. Pin - 422001. Maharashtra, INDIA.

**Factory Add. :**

H-580/715, Accurate Ware House, Vilholi, Nashik – 422010. Maharashtra, India.

**[www.ahmedgroupindia.com](http://www.ahmedgroupindia.com)**

**Email:** [info@ahmedgroupindia.com](mailto:info@ahmedgroupindia.com)  
[mci.ahmedgroup@gmail.com](mailto:mci.ahmedgroup@gmail.com)

**Phone:** (0253) – 2500339,

**+91 97300 23470,**

**+91 94220 95494,**

**+91 81498 09899.**